

# Member Link

## DPCU - Enderlin

### Participates in Maryhill Fundraiser



Fifty one years is certainly a milestone when it comes to keeping a successful event functioning!

Dakota Plains Credit Union is honored to continue

being a part of the annual fundraiser for Maryhill Nursing Home in Enderlin.

Maryhill asks businesses and other community members to sponsor a table and decorate it with the theme that has been selected for the year. Since "Careers" was the theme, DPCU Enderlin branch decided to focus on Military as their career choice.

Kathy Shedeed and Tina Bleecker represented DPCU and served at the Military table that was decorated with camouflage and burlap. Personal military items belonging to Tina's great-aunt who served in the military were a great addition to the décor. A camouflage cooler bag filled with goodies was used for the centerpiece on the table and was given to one of the lucky guests from the table.

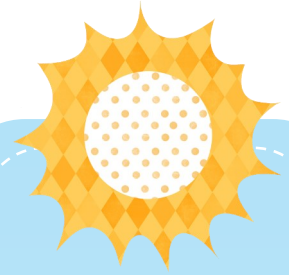
The evening included a yummy prime roast dinner with all the trimmings plus games of Bingo and a slide show by Maryhill for entertainment. Additional fundraising efforts included the sale of raffle tickets for bottles of wine and a silent auction. Each organization was also asked to donate a basket or an item to be auctioned. DPCU donated another camouflage cooler bag filled with goodies for the silent auction.



Kathy Shedeed and Tina Bleecker

Funds raised by the event are used for various items such as outdoor furnishings

Continued on page 2



#### Edgeley Office

212 5th Ave W  
PO Box 248  
Edgeley, ND 58433  
701-493-2334  
800-555-5889  
Fax 701-493-2702

#### Ellendale Office

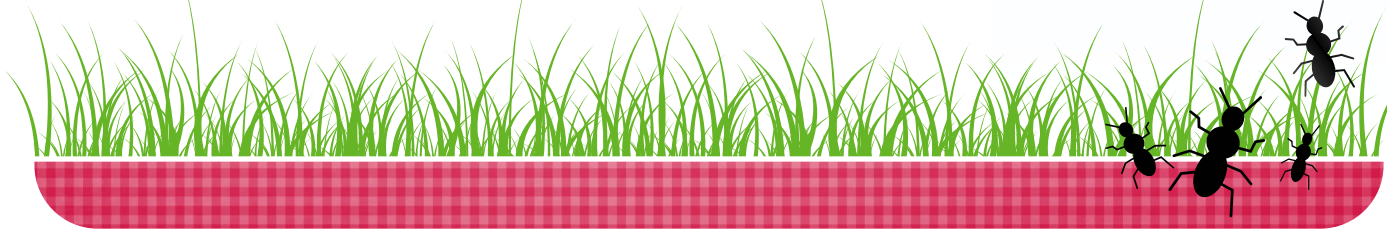
120 1st St N  
PO Box 129  
Ellendale, ND 58436  
701-349-3842  
800-347-8343  
Fax 701-349-4850

#### Enderlin Office

204 3rd Ave  
PO Box 74  
Enderlin, ND 58027  
701-437-2324  
866-706-0204  
Fax 701-437-2322

#### Sheldon Office

118 Fowler St.  
Sheldon, ND 58068  
701-882-3323



# DPCU Cares

DPCU and Choice Financial awarded Dahltin Pahl \$250 each for the Ellendale Financial Institutions Business Scholarship.

Dahltin is a recent Ellendale HS graduate who plans on attending North Dakota State University in the fall. He believes that being active in the community and volunteering is important. Pahl put that belief into action by volunteering in school, with baseball concessions, and Relay for Life. Becoming SRCTC –Oakes DECA Vice President was a role he took great pleasure in since it also gave him the opportunity to implement what he calls DECA Initiatives and to volunteer in other areas in the community.

Dahltin will be majoring in agribusiness and marketing. He is the son of Darren and Niki Pahl.



Diane Henningsen, Dahltin Pahl, Bridget Henning



DPCU donated \$2500 to Ellendale Community Ambulance to help cover the purchase of their new ambulance. Pictured below is Ellendale Branch Manager, Bridget Henning presenting a check to ambulance crew member, Don Flaherty.



Continued from page one...

for the summer and indoor décor at Maryhill. For the last two years the funds were designated for memory boxes outside each resident's room. This year monies raised from the event will go toward blanket warmers, an activity cart and a sound system for the living/dining room/chapel area.

DPCU Enderlin is proud to have been a part of this year's event that raised \$2,551 for Maryhill Nursing Home!

DPCU will be closed

Monday

September 7th

for

**Labor Day**



**MAKING CENTS:**

**SAVING MADE EASY**

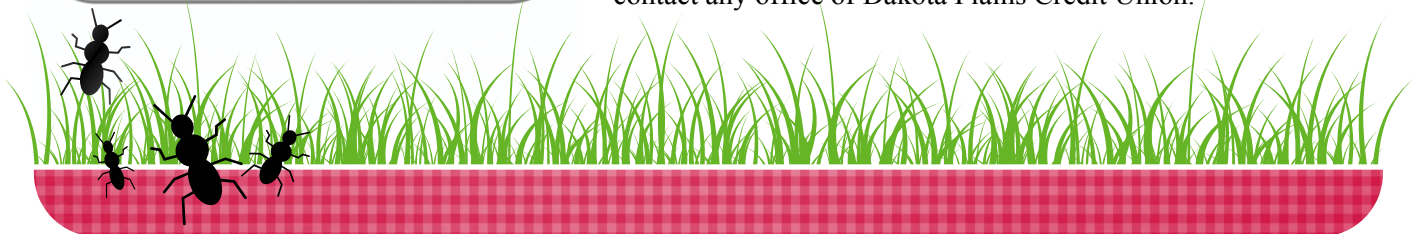
Dakota Plains Credit Union has a program to make saving easy for any member who has a debit card....Making Cent\$ is that program.

**How Making Cent\$ works:**

Enroll in our Making Cent\$ savings program and when you make everyday purchases with your Dakota Plains Credit Union debit card we will:

- Round up your purchase to the nearest dollar amount.
- Transfer the difference from your checking account to your savings account at the end of the day in one transfer amount.

This subtle way of savings will build up your savings account in no time and you won't even notice the small amounts being deducted from your checking account. To enroll in this service contact any office of Dakota Plains Credit Union.





# Relay for Life

Ellendale hosted the 2015 Dickey County Relay for Life on Friday, June 19<sup>th</sup>. Plans were made to hold the event at the Ellendale track but it was moved to the Dickey County Fair Grounds at the last minute so there would be shelter in case of inclement weather. The committee was sure glad they made that decision as the rain did come around 10:00 pm when the firework show was underway. Teams set up camp to sell food and other items for the relay which began at 2:00 pm. The crowd grew larger during the supper rush and stayed for the opening ceremonies at 7:00 pm. We heard survivor stories from Shirley Winters and Tom and Sharon Vanorny. A very lively auction of items that were donated by area businesses and teams added to the entertainment of the

evening. There were some pretty heated bid battles which will benefit the American Cancer Society greatly! Next was the always moving luminary ceremony. Attendees heard some inspirational readings and also witnessed the survivor's victory lap. Approximately 40 survivors attended the event. The evening ended with fireworks and a midnight movie to entertain the few that stuck it out until 2:00 a.m. Relay For Life 2015 was a huge success with \$40,000 raised and more donations expected as teams continue to fundraise. You can track the progress of teams and the event at [www.relayforlife.org](http://www.relayforlife.org). The committee would like to thank everyone who donated both time and money to the event.



**Riddle Me This:** Weight in my belly, trees on my back, nails in my ribs, feet I do lack . What am I?

## A Step Back in Time

Fifty years ago Dakota Plains Credit Union held assets worth \$365,343.76. The Board of Directors were Harold Jolin, Joe Diemert, Ralph Washburn, Vern Syversen, and Paul Musland with James Gackle as treasurer. The Credit Committee was Joe Fuher, William Rempfer, Melvin Moench. Laurie Hartwig, Jack Fenno Jr., and Harold Ellingson were the Supervisory Committee. In February of 1965 the members totaled 619. A new office was built in the Farmers Union Oil Co. John Hillerson from Central Credit Union was the annual meeting speaker and talked on the high rate of bankruptcies. The treasurer was paid \$250 and the Oil Company was paid \$150 in rent.

## Travel Securely with DPCU

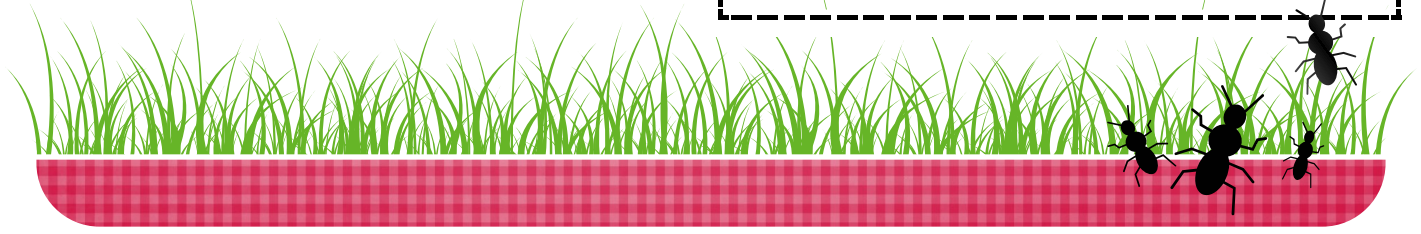
Dakota Plains Credit Union would like to remind all cardholders, whether your card is an ATM, Debit, or Credit card to call one of the offices before you travel. Your purchases could be blocked when you use your card out of the normal purchasing area. To assure that your card will be available for your trip, please call your local DPCU office before you travel.

Edgeley	800-555-5889 or 701-493-2334
Ellendale	800-347-8343 or 701-349-3842
Enderlin	866-706-0204 or 701-437-2324

When you lose your card or suspect fraud and it is after business hours you can call:

Lost/Stolen	After Hours:	800-528-2273 (Domestic)
		812-647-9794 (International)

Vantiv Fraud Center: 800-889-5280 (Domestic)



# Sizzlin' Summer Cookout

What comes to mind when summer finally arrives? Sunshine, vacations, swimming and always a good gathering of friends and family for a cookout.

Each of the branches of DPCU hosted a cookout for their communities with a drawing for a new grill for existing members. The grills were purchased locally at Ellendale True Value where Butch and his staff were so wonderful to put them together for us. Thank you, Butch and his gang of dedicated employees!

Although it was a cold blustery day in May when Ellendale held their Sizzlin' Summer Cookout, over 175 people came to enjoy the grilled hot dogs and burgers. Rebekah Scallon organized the event for Ellendale with all branch employees assisting with serving. Cindy Hanson traveled from the Enderlin branch to help

serve and once again Sue Long came to lend a hand with the grilling. Thanks so much to Charlie and Jacob Russell for the use of their muscles and grilling talents! We appreciate the loan of tables and chairs from the Dickey County Fair Board, also! Roger Bobbe was the happy winner of the grill.



Bridget Henning and Roger Bobbe

attended the cookout. Sue Long and Jodie Schiele from the Edgeley branch joined the Enderlin staff to serve the event. The cookout was organized by Julie Elijah-Barker and Shelly Hanson. A huge thank you goes to the Enderlin City staff for the use of the picnic tables and trash cans. Also, thanks to Julie's family for their help in serving the event. Congratulations to Spencer Gillund, the winner of the grill!



Cindy Hanson, Spencer Gillund and Julie Elijah-Barker

Edgeley hosted their Sizzlin' Summer Cookout on June 3<sup>rd</sup> to kick off the beginning of summer. They had the pleasure of serving 145 people from the community and were pleased with the turnout. A special thank you goes to Sue Long for organizing the event in Edgeley and for all those who helped with cooking and serving. The smiles and the laughter made the day special. Congratulations to Bob Ruff who was the winner of the Edgeley grill!



Bob Ruff and Sue Long

DPCU hopes you have a fantastic summer!!!



## Summer CD Special

**1.00% APY**  
12 month  
\$5000 minimum deposit  
required.

**Great rate on new money deposits!**

**Limited Time Offer**



*Do you Kasasa?*

**Dakota Plains Credit Union**

*Come grow with us!*

Federally Insured by NCUA

We now offer two free checking accounts that offer great rewards! It's as easy as using your debit card, cu-online, and receiving e-statements to be qualified to get a Kasasa checking account! You get to decide which reward you want, plus we will refund your ATM fees nationwide. Stop in at your local Dakota Plains Credit Union office to check out your options and sign up today!

**Riddle Me This:** A ship.

The Enderlin Branch hosted their Sizzlin' Summer Cookout on June 10th. The weather was perfect for serving over 180 members that